



# WELCOME TO FONTYS SCHOOL OF BUSINESS MANAGEMENT, EDUCATION AND TECHNOLOGY

We trust that our open learning environment makes a positive contribution to enhancing the exchange of knowledge and cooperation between students, tutors and the business world.

In this part of the booklet you can find more information on our new floor and the specific agreements for the following full-time study programmes: Automotive Management, Bedrijfsmanagement MKB, Technische Bedrijfskunde and Industrial Engineering & Management. These supplementary agreements also apply to the following part-time study programmes: Technische Bedrijfskunde, Leraar Technisch Beroepsonderwijs and Leraar Consumptieve Techniek

## **ZONING PLAN FOR STUDY PROGRAMMES AND OPERATIONAL MANAGEMENT**

You can find the study programmes on the third floor: Bedrijfsmanagement MKB in zones 3.55 and 3.56, Technische Bedrijfskunde and Industrial Engineering & Management 3.65, Leraar Technisch Beroepsonderwijs and Leraar Consumptieve Techniek in zones 3.62 and 3.64, and the operational management department and Service Desk in zones 3.62 and 3.61. See map.

### **Service Desk**

The Service Desk is opened on all weekdays from 8.30 am to 1.00 pm and on Monday and Thursday afternoon from 4.00 pm to 6.00 pm.

### **Basic agreements**

The study plazas and workstations are for everyone; today you are sitting at this station and tomorrow it might be someone else. Therefore you should have consideration for others. Leave your workstation clean so that someone else can make use of it and so that it will be clean by the end of the day.



### Lockers

The Housing & Facilities service maintains 300 lockers in which you can store your laptop, documents etc. These can be rented per day. You can find more information on this on the portal of your study programme.

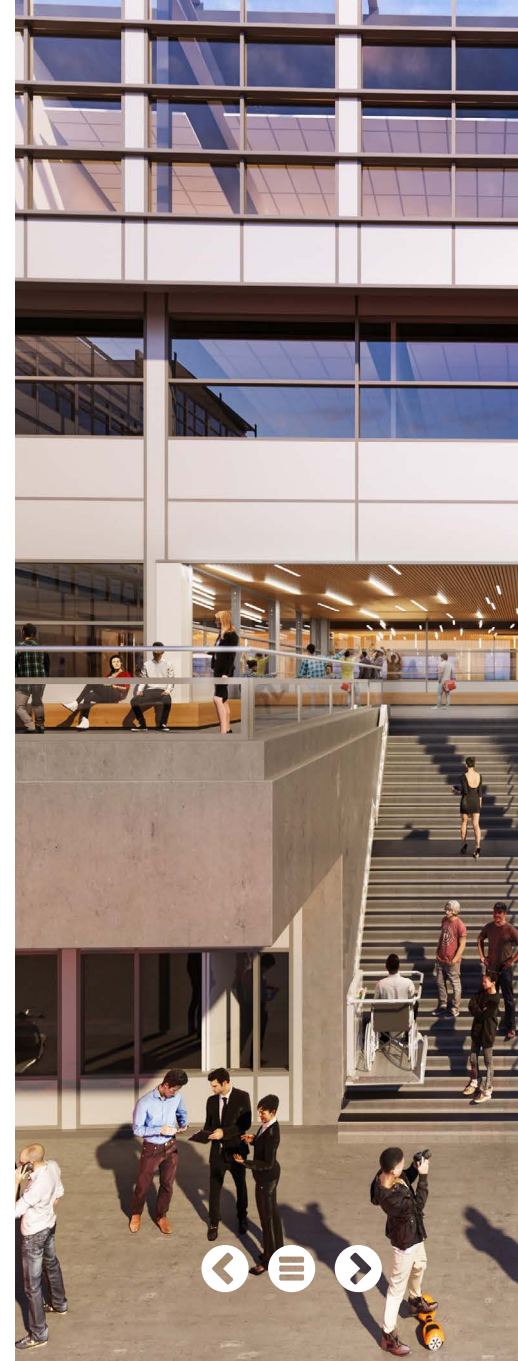
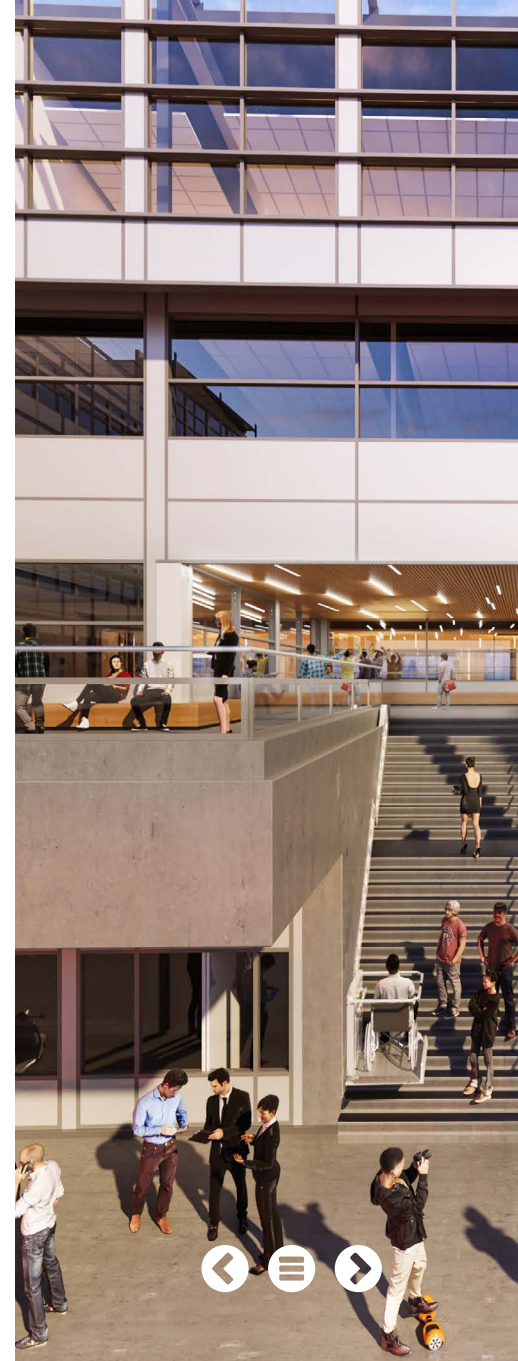
### Discussion rooms

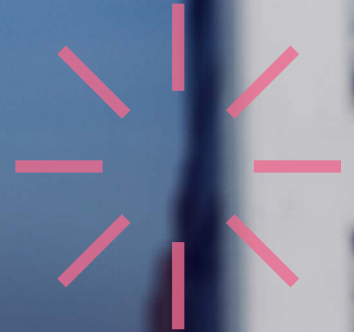
Various discussion rooms are available for students. These can be booked. Some rooms can be used on the day itself if they are empty and have not been booked.

### Wishes after the relocation

Of course, the new environment will take some time to get used to. Ask questions if you have any and let us know if you run into any problems. In the beginning, not everything will function perfectly. It is good to be aware of this. If you have any questions, you can always ask them at the Service Desk of your study programme.







SCHOOL OF  
BUSINESS  
MANAGEMENT,  
EDUCATION AND  
TECHNOLOGY